

# Module<sup>X</sup>

## Flow Computer

Accurate, Innovative, Simple

## Specifications

### Environmental

- Class 1 Division 2
- T5 Groups A,B,C,D
- -40 °C to 85 °C Operating
- 95% Humidity Non-Condensing
- 10 - 36 Volts DC 1 Watt
- Intertek N.A. 5015715

### Fluid Products

- API Ch. 11 MPMS Petroleum Products
- Crude Oil
- Refined Products
  - Gasolines
  - Jet Fuels
  - Fuel Oils
- Lubricating Oils
- LPG's and NGL's
- Chemical Products
- Aromatic Products
- API, ASTM, GPA, ISO

### Applications

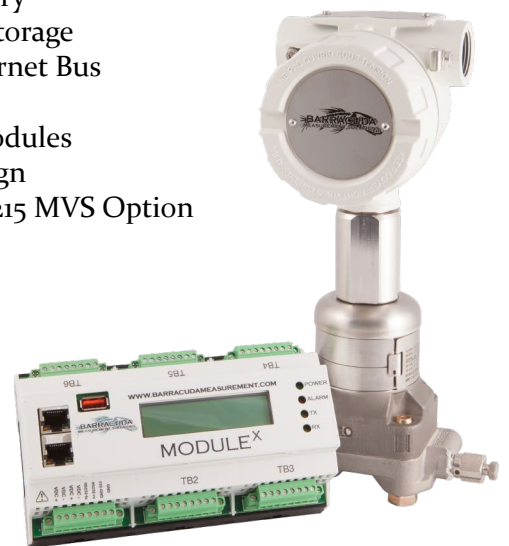
- Custody Transfer
- Pipeline Measurement
- LACT Metering
- Production / Wellhead
- Refining & PetroChemical
- Meter Proving
- Bi-Directional Batching

### Meter Types

- AGA 7 Pulse Type Meters
- Turbine
- Coriolis
- Ultrasonic
- Positive Displacement
- Magnetic Meter

### Features

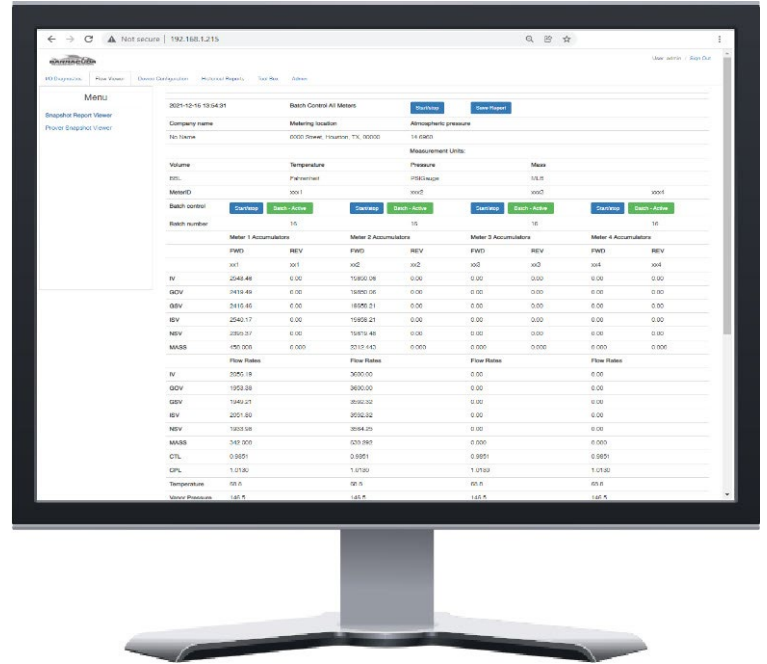
- WebServer Configuration
- Removable Flash Memory
- Up to 32 Gb Retentive Storage
- Dual Independent Ethernet Bus
- 5 ppm Clock Precision
- Interchangeable I/O Modules
- Compact DIN Rail Design
- Integrated Rosemount 215 MVS Option



# Overview

The Module<sup>x</sup> is one of the most technologically advanced flow computers available on the market today. Its feature rich, module based design allows for flexible I/O deployment on the basis of customer or application specific requirements. User defined I/O provides potential cost savings and greater adaptability to the wide variety of unique measurement requirements the industry can present.

With 5 peripheral hardware PCI slots and various I/O card options available, the Module<sup>x</sup> stands ready to tackle even the most demanding applications. From simple single run crude oil **Monthly totalizing** to four meter run bi-directional NGL **Batch Ticketing** to volumetric piston type **Meter Proving** the Module<sup>x</sup> is ready to rise to the challenge!



Batch Report		Measurement Units	
Company name	No_Name	Volume	BBL
Metering location	0000_Street_Houston_Tx_00000	Temp	Fahrenheit
Atmospheric pressure	14.696000	Mass	MLB
		Press	PSI-Gauge
Batch Opening: 2021-12-15 12:42:14			
Batch Closing: 2021-12-15 12:52:00			
Meter ID: xxx2		Company name	No_Name
		Metering location	0000_Street_Houston_Tx_00000
		Atmospheric pressure	14.696000
		Volume	BBL
		Temp	Fahrenheit
		Mass	MLB
		Press	PSI-Gauge
Daily Report			
Day Opening: 2021-12-15 00:00:00			
Day Closing: 2021-12-15 00:00:00			
Meter ID: xxx2		Company name	No_Name
		Metering location	0000_Street_Houston_Tx_00000
		Atmospheric pressure	14.696000
		Volume	BBL
		Temp	Fahrenheit
		Mass	MLB
		Press	PSI-Gauge
Month Report			
Month Opening: 2021-12-01 15:17:00			
Month Closing: 2021-12-15 12:49:00			
Meter ID: xxx2		Company name	No_Name
		Metering location	0000_Street_Houston_Tx_00000
		Atmospheric pressure	14.696000
		Volume	BBL
		Temp	Fahrenheit
		Mass	MLB
		Press	PSI-Gauge
Meter: Opening Accumulators			
	Forward (xxx2)	Reverse (xxx2)	
IV	0.00	0.00	
GOV	0.00	0.00	
ISV	0.00	0.00	
NSV	0.00	0.00	
MASS	0.000	0.000	
Meter: Day Totals			
	Forward	Reverse	
IV	585.05	0.00	
GOV	585.05	0.00	
ISV	584.83	0.00	
NSV	584.83	0.00	
MASS	579.35	0.000	
	100.352		
Meter: Month Totals			
	Forward	Reverse	
IV	585.05	0.00	
GOV	585.05	0.00	
ISV	584.83	0.00	
NSV	584.83	0.00	
MASS	579.35	0.000	
	100.352		
FWA K-Factor			
FWA CTL	1000.0000		
FWA CPL	1.0230		
FWA Density Correction Factor	1.00000		
FWA Meter Factor	1.0000		
FWA Vapor Pressure	146.5		
FWA Pressure	420.0		
FWA Temperature	69.7		
FWA Uncorrected Density	0.4993		
FWA Density	0.3008		
FWA Relative Density	0.8000		
FWA Relative Density <sub>60</sub>	0.8111		
FWA API	151.5		
FWA API <sub>60</sub>	150.9		
FWA B5&W percentage	1.2011		
FWA K-Factor			
FWA CTL	1000.0000	0.0000	
FWA CPL	1.0204	0.0000	
FWA Density Correction Factor	1.00000	0.00000	
FWA Meter Factor	1.0000	0.0000	
FWA Vapor Pressure	302.9	0.0	PIG
FWA Pressure	427.7	0.0	PIG
FWA Temperature	69.7	0.0	F
FWA Uncorrected Density	0.2913	0.0000	gm/cc
FWA Density	0.4339	0.0000	gm/cc
FWA Relative Density	0.2913	0.0000	SG
FWA Relative Density <sub>60</sub>	0.2542	0.0000	SG <sub>60</sub>
FWA API	-4918.6	0.0	API
FWA API <sub>60</sub>	182.6	0.0	API <sub>60</sub>
FWA B5&W percentage	2.1659	0.0000	



Accurate, Innovative, Simple

Barracuda Measurement Solutions LLC.  
10701 Corporate Drive, Suite 360  
Stafford, TX. 77477 USA  
Tel. 281-980-2832 Fax 979-596-5088

